



Concurrent Enrollment Scholarship Information Fall 2022

The Cherokee Nation College Resource Center provides scholarships and services for high school students preparing for a college degree. Students must be current Cherokee Nation citizens verified by the Registration Department. The following scholarship opportunity is available for the 2022-2023 academic year.

Concurrent Enrollment Scholarship - Funds high school juniors or seniors who reside within the Cherokee Nation Reservation areas or contiguous counties. The contiguous area (blue area on map) is more clearly defined as those counties located in the following states:

Oklahoma:

LeFlore, Haskell, Pittsburg, McIntosh, Muskogee, Wagoner, Tulsa and Osage Counties.

Arkansas:

Benton, Crawford, Sebastian and Washington Counties.

Kansas:

Chautauqua, Cherokee, Labette and Montgomery Counties.

Missouri:

McDonald County.

Students must be enrolled in General Education courses at an accredited college or university. Private and proprietary college/universities are not eligible. Cherokee Nation will pay up to six (6) credit hours per semester and shall be contingent on the availability of funding. Funding will go towards tuition, books, and fees for high school juniors and funding will go towards books and fees for high school seniors. Payments will be made and sent directly to the school for eligible applicants. Parents are responsible for remaining balances.

Fall application period: March 1 – June 15
Application Website: <https://scholarships.cherokee.org>

Students must apply each semester. No late applications will be accepted. Applicants must prepare the following documents as PDF files to upload to the online scholarship application:

NEW STUDENTS

- Most recent high school transcript
- Fall 2022 college class schedule
- Counselor approval letter*
- Parent approval letter*

* Example approval letters can be found at www.cherokee.org/Services/Education/College-Resources

CONTINUING STUDENTS (Students funded Spring 2022 on the CN Concurrent Enrollment Program)

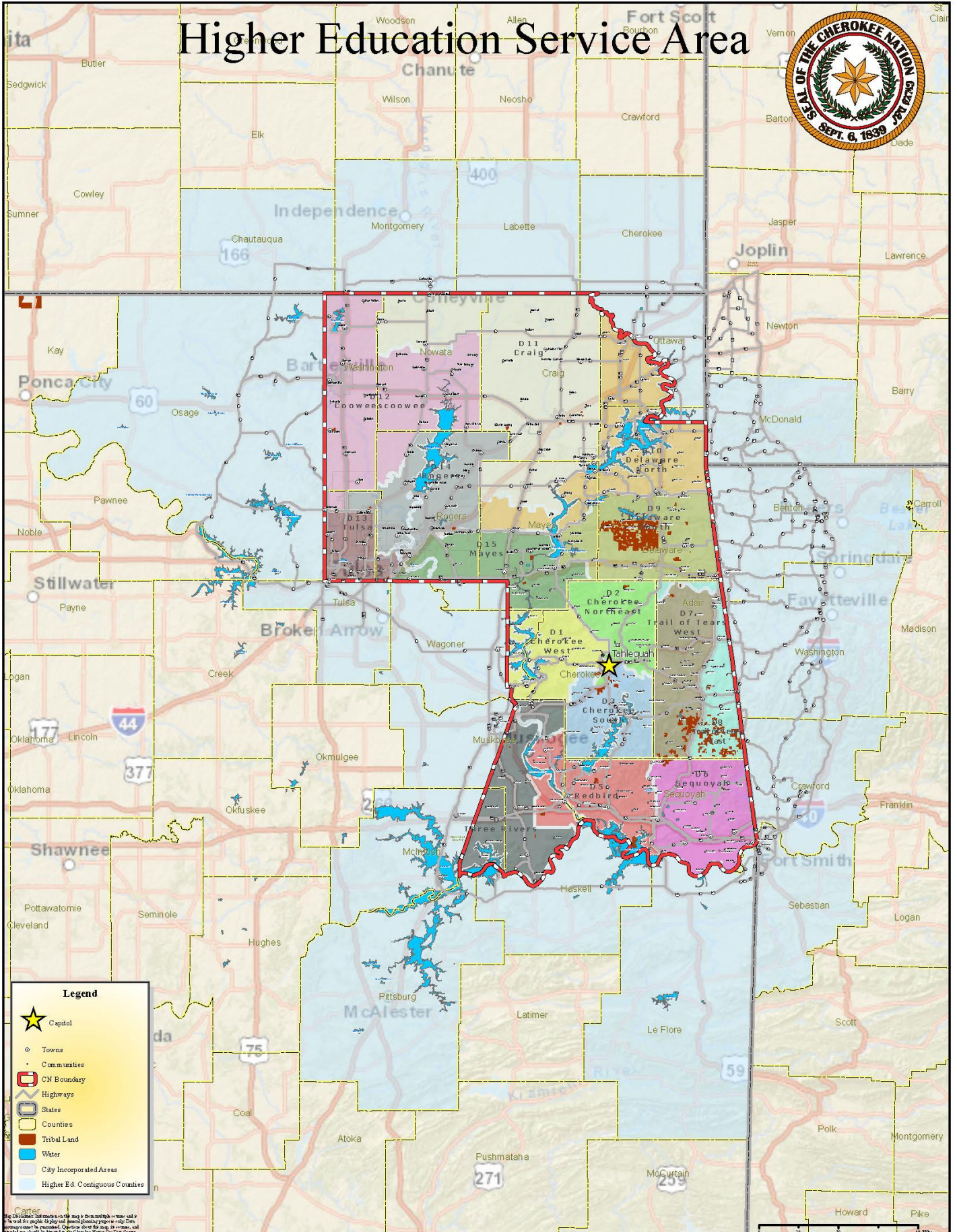
- Fall 2022 college class schedule
- Most recent college transcript
- Counselor approval letter*
- Parent approval letter*
- Spring 2022 Self-Help form

To request additional information, feel free to contact:

Concurrent Enrollment Advisor Brenda Butler brenda-butler@cherokee.org 918-207-3948

Residency restrictions may apply. Community service hours apply. All scholarships are subject to the availability of funding.

Higher Education Service Area



Legend

- Capitol
- Towns
- Comm. unities
- CN Boundary
- Highways
- States
- Counties
- Tribal Land
- Water
- City Incorporated Areas
- Higher Ed. Contiguous Counties